

OPERATION MANUAL

FLOOR SAW MF20



WARNING

To reduce the risk of injury, all operators and maintenance personnel must read and understand these instructions before operating, changing accessories, or performing maintenance on Masalta power equipment. All possible situations cannot be covered in these instructions. Care must be exercised by everyone using, Maintaining or working near this equipment.

CONTENTS

RULES FOR SAFE OPERATION

General Safety	1-2
Diamond Blade Safety	2
Cutter Transportation Safety	2
Emergencies	3
Maintenance Safety	3

OPERATION

Introduction	3
Determining the Right Machine	3
Operating Principle	3
Delivery Checks	3
Installing Blade	4
Type of Cutting	4
Before Starting	4
To Start Cutting	4
Cutting	5
Belts & Pulleys	5
Dry Cutting	5

MAINTENANCE

Troubleshooting	6-7
-----------------------	-----

LUBRICATION AND SERVICE

SPECIFICATION

WARRANTY

REPLACEMENT PARTS LIST

RULES FOR SAFE OPERATION

WARNING:

Failure to follow instructions in this manual may lead to serious injury or even death! This equipment is to be operated by trained and qualified personnel only! This equipment is for industrial use only.

The following safety guidelines should always be used when operating these concrete Cutters:

GENERAL SAFETY

DO NOT operate or service this equipment before reading the entire manual.

This equipment should not be operated by persons under 18 years of age.

NEVER operate this equipment without proper protective clothing, shatterproof glasses, steel-toed boots and other protective devices required by the job.

NEVER operate this equipment when not feeling well due to fatigue, illness or taking medicine.

NEVER operate this equipment under the influence of drugs or alcohol.

NEVER use accessories or attachments, which are not recommended by our company for this equipment. Damage to the equipment and/or injury to user may result.

The manufacturer does not assume responsibility for any accident due to equipment modifications.

Whenever necessary, replace nameplate, operation and safety decals when they become difficult to read.

ALWAYS check the machine for loosened threads or bolts before starting.

NEVER touch the hot exhaust manifold, muffler or cylinder. Allow these parts to cool before servicing engine or saw.

High Temperatures – Allow the engine to cool before adding fuel or performing service and maintenance functions. Contact with **hot** components can cause serious burns.

The engine section of this cutter requires an adequate free flow of cooling air. **NEVER** operate the cutter in any enclosed or narrow area where free flow of the air is restricted. If the air flow is restricted it will cause serious damage to the saw or engine and may cause injury to people. Remember the cutter's engine gives off **DEADLY** carbon monoxide gas.

ALWAYS refuel in a well-ventilated area, away from sparks and open flames.

ALWAYS use extreme caution when working with flammable liquids. When refueling, stop the engine and allow it to cool. **DO NOT** smoke around or near the machine. Fire or explosion could result from fuel vapors, or if fuel is spilled on a hot engine.

NEVER operate the cutter in an explosive atmosphere or near combustible materials. An explosion or fire could result causing severe bodily harm or even death.

Topping-off to the **fuel** filler port is dangerous, as it tends to spill fuel.

NEVER use fuel as a cleaning agent.

ALWAYS read, understand, and follow procedures in operator's Manual before attempting to operate equipment.

ALWAYS be sure to operator is familiar with proper safety precautions and operating techniques before using the cutter.

Stop the engine when leaving the cutter unattended.

Block the unit when leaving or when using on a slope.

Maintain this equipment in a safe operating condition at all times.

ALWAYS stop the engine before serving, adding fuel and oil.

NEVER Run engine without air filter. Severe engine damage may occur.

NEVER Run engine without air filter. Severe engine damage may occur.

ALWAYS service air cleaner frequently to prevent carburetor malfunction.

ALWAYS store equipment properly when it is not being used. Equipment should be stored in a clean, dry location out of the reach of children.

NEVER operate this cutter in areas that contain combustible material or fumes. Fire and/or explosions may result from errant sparks from the equipment.

WARNING:

DO NOT operate this equipment unless all guards and safety devices are attached and in place.

Caution must be exercised while servicing this equipment. Rotating and moving parts can cause injury if contacted.

Keep all inexperienced and unauthorized people away from the equipment at all times.

Unauthorized equipment modifications will void all warranties.

DIAMOND BLADE SAFETY

Use appropriate steel centered diamond blades manufactured for use on concrete cutters.

ALWAYS inspect diamond blades before each use. The blade should exhibit no cracks, dings, or flaws in the steel centered core and/or rim. Center (arbor) hole must be undamaged and true.

Examine blade flanges for damage, excessive wear

and cleanliness before mounting blade. Blade should fit snugly on the shaft and against the inside/outside blade flanges.

Ensure that the blade is marked with an operating speed greater than the blade shaft speed of the cutter.

Only cut the material that is specified by the diamond blade. Read the specifications of the diamond blade to ensure the proper tool has been matched to the material being cut.

ALWAYS keep blade guards in place. Exposure of the diamond blade must not exceed 180 degrees.

Ensure that the diamond blade does not come into contact with ground or surface during transportation. **DO NOT** drop the diamond blade on ground or surface.

The engine governor is designed to permit maximum engine speed in a no-load condition. Speeds that exceed this limit may cause the diamond blade to exceed the maximum safe allowable speed.

exceed the maximum safe allowable speed.

Ensure that the blade is mounted for proper operating direction.

CUTTER TRANSPORTATION SAFETY

Use the lifting bail and appropriate lifting equipment to ensure the safe movement of the cutter.

DO NOT use the handle bars and/or front pointer as lifting points.

NEVER tow the saw behind a vehicle.

Ensure that both pointer bars are positioned appropriately to minimize their exposure during transportation.

Safeguard against extreme cutter attitudes relative to level. Engines tipped to extreme angles may cause oil to gravitate into the cylinder head making the engine difficult to start.

NEVER transport the cutter with the blade mounted.

EMERGENCIES

ALWAYS know the location of the nearest fire extinguisher and first aid kit. Know the location of the nearest telephone. Also know the phone numbers of the nearest ambulance, doctor and fire department. This information will be invaluable in the case of an emergency.

MAINTENANCE SAFETY

NEVER lubricate components or attempt service on a running machine.

ALWAYS allow the machine a proper amount of time to cool before servicing.

Keep the machinery in running condition.

Fix damage to the machine immediately and always replace broken parts.

Dispose of hazardous waste properly. Examples of potentially hazardous waste are used motor oil, fuel and fuel filters.

DO NOT use food or plastic containers to dispose of hazardous waste.

OPERATION

Introduction/Determining the Right Machine

Congratulations on your purchase of our Cutter! You've made an excellent choice! Our floor cutter has been specifically designed as the ideal machine for the professional contractor who is engaged in concrete and asphalt flat sawing.

The machines used for the primary purpose of "flat" sawing. This type of sawing is described as "flat" because the pavement is cut somewhere close to a horizontal plane. It is the most common type of diamond blade cutting.

Concrete cutters in the industry are available in a variety of types, sizes and styles, they range from manual or self propelled in horsepower from 7-72hp. It is possible to cut both concrete (green or cured, with or without rebar) or

asphalt with a concrete cutter. Our MF18 utilized for jobs requiring precision cutting including floors, pavements, walkways, ramps and other flat sawing applications.

You will find a cutter to fit a wide variety of job applications.

Upon receipt of your machine, **CAREFULLY CHECK FOR ANY FREIGHT DAMAGE.** Any damage should be immediately reported to the carrier and a claim registered.

Operating Principle/Delivery Checks/ Installing Blade/Types of Cutting

OPERATING PRINCIPLE

The following instructions were compiled to provide you information on how to obtain long and trouble free use of the unit. Periodic maintenance of this unit is essential. Read the manual in its entirety and follow the instructions carefully. Failure to do so may injure yourself or a bystander.

DELIVERY CHECKS

Immediately upon taking delivery of your new equipment and before putting it into service:

Read the handbook completely—it could save a great deal of unnecessary expense.

Read the engine manual supplied.

Check the general condition of the equipment—has it been damaged during delivery?

Check engine oil level.

Check fuel levels.

Recommend lubricants are detailed in the **CARE AND MAINTENANCE** section.

INSTALLING BLADE

1. Be certain that the spark plug is disconnected or saw is unplugged.
2. Remove the blade shaft nut, and take off outside blade shaft flange.
3. Clean off any foreign particles on the clamping surfaces of flanges and on the mounting surface of the blade.
4. Place the blade on the blade shaft, lining up the offset drive pin in the blade with the drive pin in the mounting collar (if the pin system is available on the machine). If your blade has a directional rotational arrow, position arrow for down cut (diamond tail trailing for down cut).
5. Replace the outside blade shaft flange on the blade shaft. Drive pin on the inside collar must project through the drive hole in the blade and into the outside collar (if the pin system is available on the machine).
6. Tighten the blade shaft nut securely against star washer and outside flange, using wrench supplied.
7. Reconnect the spark plug or (with switch "off") plug in the electric supply cord.

TYPES OF CUTTING

Cut speed depends entirely on using the correct blade for the material to be cut. Wet or dry, diamond blades of various specifications are available for cutting concrete or asphalt.

Before Starting/Cold Start/Hot Start/ To Start Cutting

BEFORE STARTING

1. Use correct blade for cutting conditions.
2. Ensure arbors and flanges are clean and undamaged.
3. Mount blade and tighten securely using wrench.
4. When wet cutting, check water jets for adequate flow.
5. Align pointer with cutter blade.

Caution – Set unit up in an open area. Avoid close proximity to structures or other equipment. Failure to do so may cause inadvertent injury to operator or other persons in the area.

Cold start – Open the fuel valve under the gas tank all the way. Position the engine stop switch, located on the engine, to run. Open the throttle approximately half way and apply the choke. Pull the starter rope sharply. When

the engine starts, open the choke and adjust the throttle as necessary to keep it running. Allow the engine to warm up for a few minutes before placing it under the load. If the engine doesn't start after (3) pulls, open choke slightly to prevent flooding. Always operate the engine at full throttle when under load.

Hot Start – Open the valve under the gas tank all the way if it has been shut off. Open the throttle approximately half way. Do not apply the choke. Pull the starter rope sharply until the engine starts. When the engine starts, adjust the throttle. Always operate the engine at full throttle when under load.

NOTE: These starting instructions are general guidelines only. Since many engine options are available, consult the Engine Manual included with this unit for specific instructions.

Caution – Gasoline Engines – To improve the engine service life, allow the engine to idle without load for (2) to (5) minutes before shutting it down. When the idling period is up, use the stop switch located on the engine and turn it to stop. Close the fuel valve under the gas tank. Engine flooding can occur if the valve is left open during transport.

TO START CUTTING

1. Start engine and let engine warm up. All cutting is done at full throttle.
2. Align blade and cutter with cut. If wet cutting, open water valve and turn water safety switch on.
3. Step on the left side of PEDAL until hear a "click", then turn on the WHEEL HANDLE on the top of the machine to remove the equipment forward and reverse, step down the right side of PEDAL to change to "push" driving system.
4. Lower blade into cut slowly.
5. Cut as fast as blade will allow. If blade climbs out of cut, reduce forward speed or depth of cut.
6. Use only enough side pressure on cutter handles to follow cutting line.

Cutting/Belts & Pulleys

CUTTING

Lower the blade into concrete to required depth by turning the tilt crank counterclockwise. Ease the saw slowly forward. Slow forward pressure if the saw begins to stall.

Note: For deeper cuts (4 inches/102mm or more), several cuts should be made in incremental steps of 1-1/2 inch (38mm) to 2 inches (51mm) until the desired depth is reached.

Push the saw steadily forward using the front pointer as a guide. Exert enough forward pressure so that the engine/motor begins to labor, but does not slow down. If the saw begins to stall, retard forward movement until full RPM is restored to the blade. If saw stalls, raise the blade out of the cut before restarting. Avoid excessive side pressure or twisting of the blade in the cut.

BELTS & PULLEYS

NEVER MAKE ADJUSTMENTS TO V-BELTS AND PULLEYS WHILE ENGINE IS RUNNING.

1. The best tension for a v-belt drive is the lowest tension at which the belts will not slip under full load.
2. Take up tension until the belts are snug in the grooves. Run the drive for about five (5) minutes to "seat" the belts. Then impose the peak load. If the belts slip, tighten them until they no longer slip at peak load. Most new belts will need additional tensioning after seating.
3. Remember, too much tension shortens belt and bearing life.
4. Check the belt tension frequently during the first day of operation. Check the belt tension periodically thereafter and make any necessary adjustments.
5. The two most common causes of sheave misalignment are:
 - a) The engine drive shaft and the blade shaft are not parallel.
 - b) The pulleys are not located properly on the shafts.
6. To check alignment, use a steel straight edge. See Figure 1.

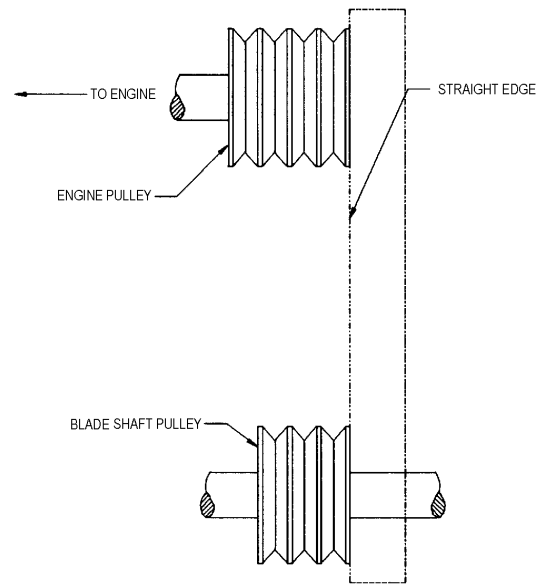


Figure 1

7. Line up the straight edge along the outside face of both pulleys shown in the drawing. All pulleys have (2) set screws in the bottom of their grooves. Set screws require thread locking lock title.
8. Misalignment will show up as a gap between the pulley face and straight edge. Make sure there is clearance between arbor pulley and saw base on both sides.

DRY CUTTING

Never operate any saw without safety guards in place.

Do not exceed maximum operating speed established for blade diameter.





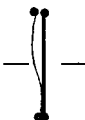
Do not force blade into material: allow blade to cut at its own speed.

Do not make long continuous cuts. Never dry cut for more than 30 seconds at a time. Allow blade to cool.

Do not cut or grind with side of blade or cut a curve or radius. Do not cut dry with blades recommended for wet cutting.

Do not operate saw with blade diameter larger than machine's capacity.

MAINTAINENCE - TROUBLESHOOTING

PROBLEM	CAUSE	REMEDY
UNEVEN SEGMENT WEAR	(In wet cutting) Insufficient water (usually on one side of blade). Equipment defects also can cause the segments to wear unevenly. Saw head is misaligned.	Flush water system. Check flow to both sides of blade. Replace bad bearings, worn arbor shaft or misalignment to spindle. Check alignment for squareness, both vertically and horizontally, of the saw blade.
		
SEGMENT CRACKS	Blade is too hard for material being cut.	Use a blade with a softer bond/matrix.
		
SEGMENT LOSS	Blade overheats because of lack of coolant (water or air). Core is worn from undercutting. Defective collars/flanges set blade out of alignment. Blade is too hard for material being cut. Blade is cutting out of round, causing a pounding motion. Improper blade tension.	(Wet Cutting) Check water lines. Make sure flow is adequate on both sides of blade and there are no blockages Use sufficient water to flush out the cut. (Dry Cutting) Run blade free of cut periodically to air cool. Clean collars/flanges or replace if they are under recommended diameter. Use proper blade specification for material being cut. Replace worn bearings; realign blade shaft or replace worn blade mounting arbor. When ordering blades match shaft speed of saw. Check spindle speed to ensure blade is running at correct RPM. Avoid twisting or turning blade in the cut.
		
CRACKS IN CORE	Blade flutters in cut as a result of losing blade tension. Blade specification is too hard for the material being cut.	Tighten the blade shaft nut. Make sure blade is running at proper speed and that drive pin is functioning properly. Use a softer bond/matrix to eliminate stress.
		
LOSS OF TENSION	Core overheating. Core overheating as a result of blade spinning on arbor. Core overheating from rubbing the material being cut. Unequal pressure at blade clamping collars/flanges. Blade is too hard for the material being cut.	Make certain blade RPM is correct. Check water flow, distribution and lines. Tighten the blade shaft nut. Make certain the drive pin is functioning. Properly align the saw to square cut. Collars/flanges must be identical in diameter and the recommended size. Use a softer bond/matrix to reduce stress.
		

MAINTAINENCE - TROUBLESHOOTING

PROBLEM
BLADE WOBBLES



CAUSE
Blade is on a damaged or worn saw.
Worn collar.
Blade runs at an incorrect speed.
Collar/flange diameters are not identical.
Blade is bent as a result of dropping or twisting.

REMEDY
Check for bad bearings, bent shaft, or worn mounting arbor.
Check collars/flanges to make sure they are clean, flat and of correct diameter.
Set engine at proper RPM.
Use proper size blade collars/flanges.
DO NOT use bent blade.
Contact blade manufacturer.

BLADE WILL NOT CUT



Blade is too hard for material being cut.
Blade has become dull.
Blade does not cut material it was specified for.

Select proper blade for material being cut.
Sharpen by cutting on softer abrasive material to expose diamonds. If continually sharpening, the blade is too hard for the material being cut.
Break-in on the material to be cut.
If it does not dress itself, sharpen as you would a dull blade.

UNDERCUTTING THE CORE



Abrasive wearing of the core faster than the segments.

Use water to flush out fines generated during cutting
Use wear-restartant cores.

ARBOR HOLE OUT-OF-ROUND



Collars/flanges are not properly tightened, permitting blade to rotate or vibrate on the shaft.
Collars/flanges are worn or dirty.
Blade is not properly mounted.

Make certain the blade is mounted on the proper shaft diameter. Tighten the shaft nut with a wrench to make certain that the blade is secure.
Clean collars/flanges, make sure they are not worn.
Tighten arbor nut.
Make sure the pin hole slides over drive pin.

BLADE WORN OUT OF ROUND



Shaft bearings are worn.
Surges occur because engine is not properly tuned.
Blade arbor hole is damaged from incorrectly mounting the blade.
Bond/matrix is too hard for material.
Blade is slipping, wearing one half of blade more than other.

Install new blade shaft bearings or blade shaft, as required.
Tune engine according to manufacturer's manual.
If core is worn or arbor hole damaged, DO NOT USE. Contact blade manufacturer.
Replace worn shaft or mounting arbor bushing.
Make certain that drive pin is functioning.
Tighten spindle nut.

LUBRICATION AND SERVICE

Check oil levels, wiring, hoses (air, fuel, water) and lubricate machine daily.

Repair or replace all worn or damaged components immediately.

Check drive belt tension, do not over-tension.

Make sure machine has full set of matched belts.

Check bladeshaft, make sure arbor and threads are not worn, damaged, or bent.

Bladeshaft bearings should be tight, no free play side-to-side or up and down.

Grease blade shaft bearings daily.

Blade collars should be clean, free of nicks and burrs. No diameter wear and not out of round.

Drive pin not excessively worn or bent and free of gouges.

All guards in place and secure.

All fasteners tight and secure.

Air filter/oil filter (hydraulic or engine) clean.

Flush clean water through the pump and spray the assembly every night. This prolongs the pump and blade life.

Lubricants:

Engine Oil SAE 10W/30

General Grease #1 Lithium

Clean machine before starting lubrication maintenance.

Insure machine is on solid, level ground before starting maintenance.

During lubrication maintenance insure strict cleanliness is observed at all times.

To avoid the risk of accidents, use the correct tool for the job and keep tools clean.

The draining of engine oil is best carried out when the oil is warm NOT hot.

Any spilled oil must be cleaned up immediately.

Use only clean containers for oil and only CLEAN, FRESH oils and grease of correct grade.

Contaminated Water/Fluids/Oils/Filters Must Be Disposed of Safely.

SEPECIFICATION

Motor

MF20-1	Diesel, 186	6.6kw output
MF20-2	Petrol, 188F	9.6kw output
MF20-3	Petrol, Robin EH36D	8.6kw output
MF20-4	Petrol, Honda GX390K1	9.6kw output

Operation Mass:

MF20-1	216kgs
MF20-2	193kgs
MF20-3	195kgs
MF20-4	195kgs

Max. Cutting Depth - - - - -170mm (6.5 in)

Blade size - - - - - 350-500mm (14-20in)

Depth Adjustment - - - - - Handle Rotation

Driving - - - - - Semi-self Propelled

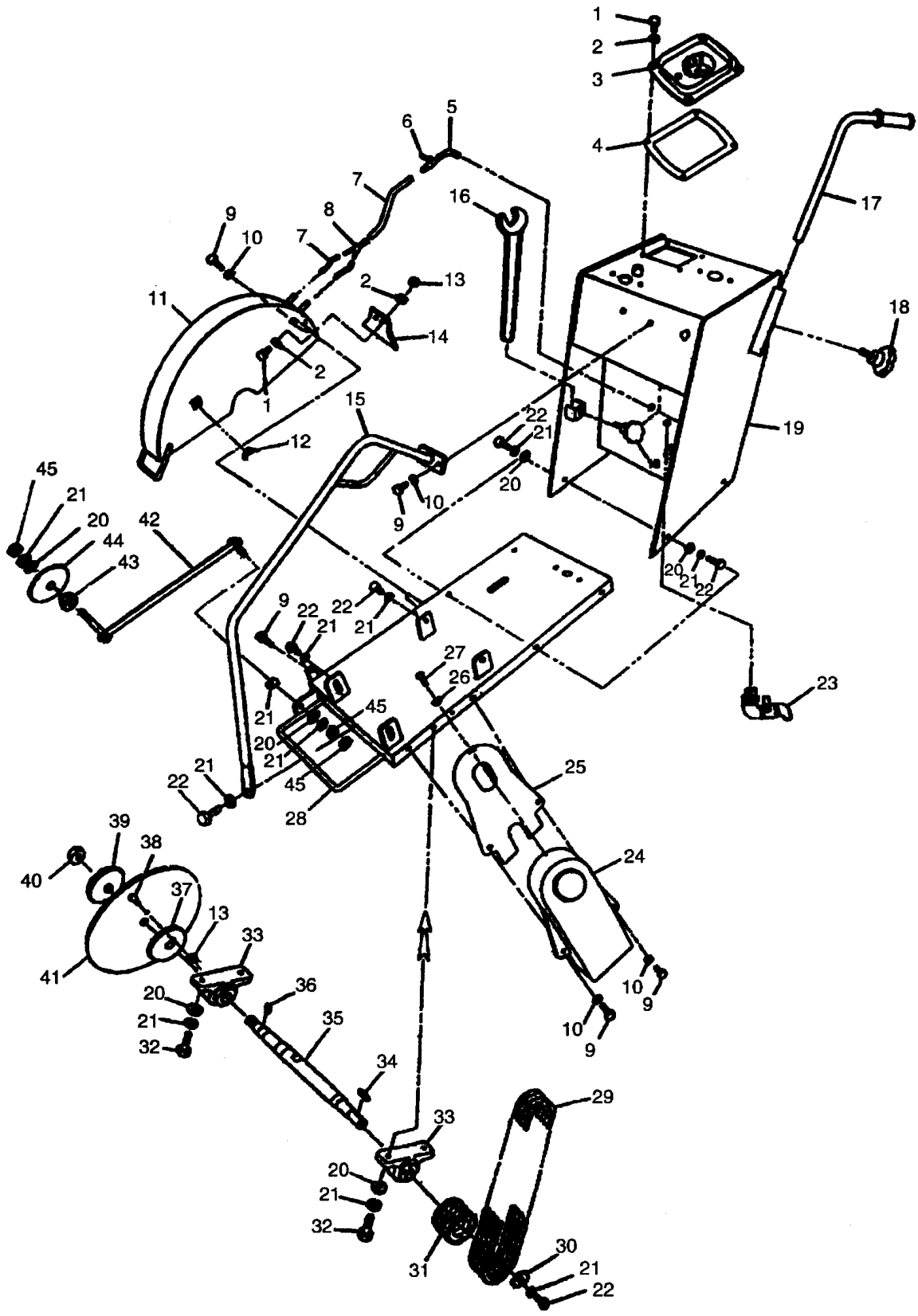
Water Tank Capacity - - - - - 40L

WARRANTY

These products are covered by warranty for a period of six (6) months from the date of purchase against defects in material or workmanship provided that:

- The product concerned has been operated and maintained in accordance with the operating instructions.
- Has not been damaged by accident, misuse or abuse
- Has not been tampered with or repaired by any unauthorized person.

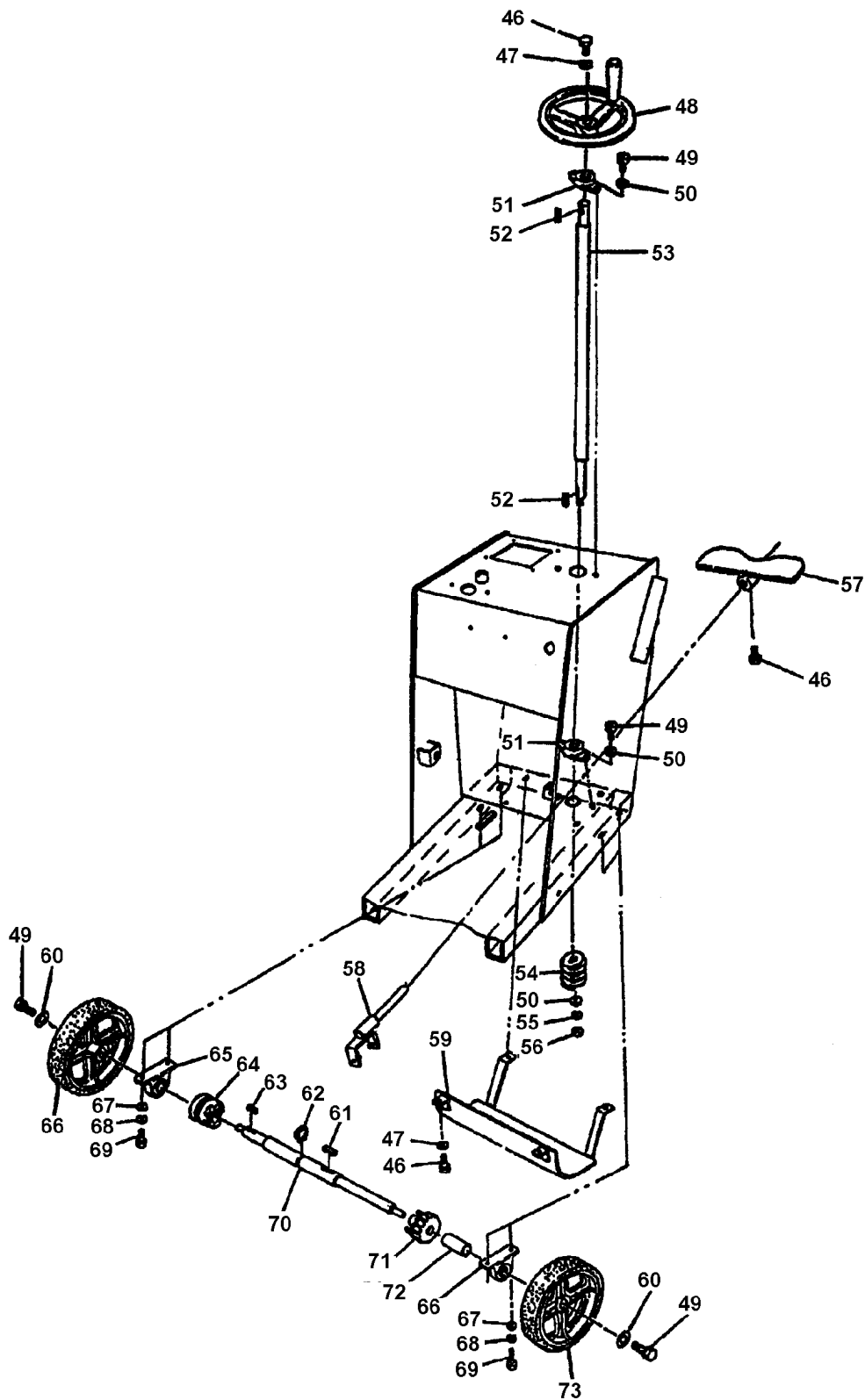
The owner is responsible for the cost of transportation to and from the authorized repairer and the unit is at the owners risk while in transit to and from the repairer.



1. Major Components

1. Major Components

ITEM NO.	PART NO.	DESCRIPTION	QTY
1	2010101	BOLT M8 X 25	3
2	2010102	WASHER 8	5
3	2010103	INJECTION MOUTH	1
4	2010104	SEAL RING	1
5	2010201	ELBOW	1
6	2010202	COCK	1
7	2010203	PLASTIC PIPE	3
8	2010204	TEE	1
9	2010301	BOLT M10 X 25	6
10	2010302	WASHER 10	5
11	2010303	BLADE GUARD	1
12	2010304	NUT (BUTTERFLY) M10	1
13	2010305	NUT M8	2
14	2010306	PROTECTIVE MAT	1
15	2010401	LIFTING HOOK	1
16	2010401	WRENCH	2
17	2010601	HANDLE	2
18	2010602	KNOB	3
19	2010701	WATER TANK	1
20	2010702	WASHER 12	15
21	2010703	SPRING WASHER	13
22	2010704	BOLT M12 X 30	10
23	2010705	COCK	1
24	2010801	BELT GUARD	1
25	2010802	INNER GUARD	2
26	2010901	WASHER 6	1
27	2010902	SCREW M6 X 12	1
28	2010903	BASE ASSY.	1
29	2010904-1	BELT FOR DIESEL ENGINE	3
	2010904-2	BELT FOR PETROL ENGINE	3
30	2011001	WASHER	1
31	2011002	PULLEY, AXIS	1
32	2011003	BOLT M12 X 45	4
33	2011004	BEARING	2
34	2011005	KEY 8 X 35	4
35	2011006	PRINCIPAL AXIS	1
36	2011007	PIN 6 X 10	1
37	2011008	BLADE FLANGE (INNER)	2
38	2011009	PIN	1
39	2011011	BLADE FLANGE (OUTER)	2
40	2011012	NUT	1
41	2011013	BLADE	1
42	2011101	POINTER	1
43	2011102	NUT	1
44	2011103	POINTER WHEEL	1
45	2011104	NUT M12	3



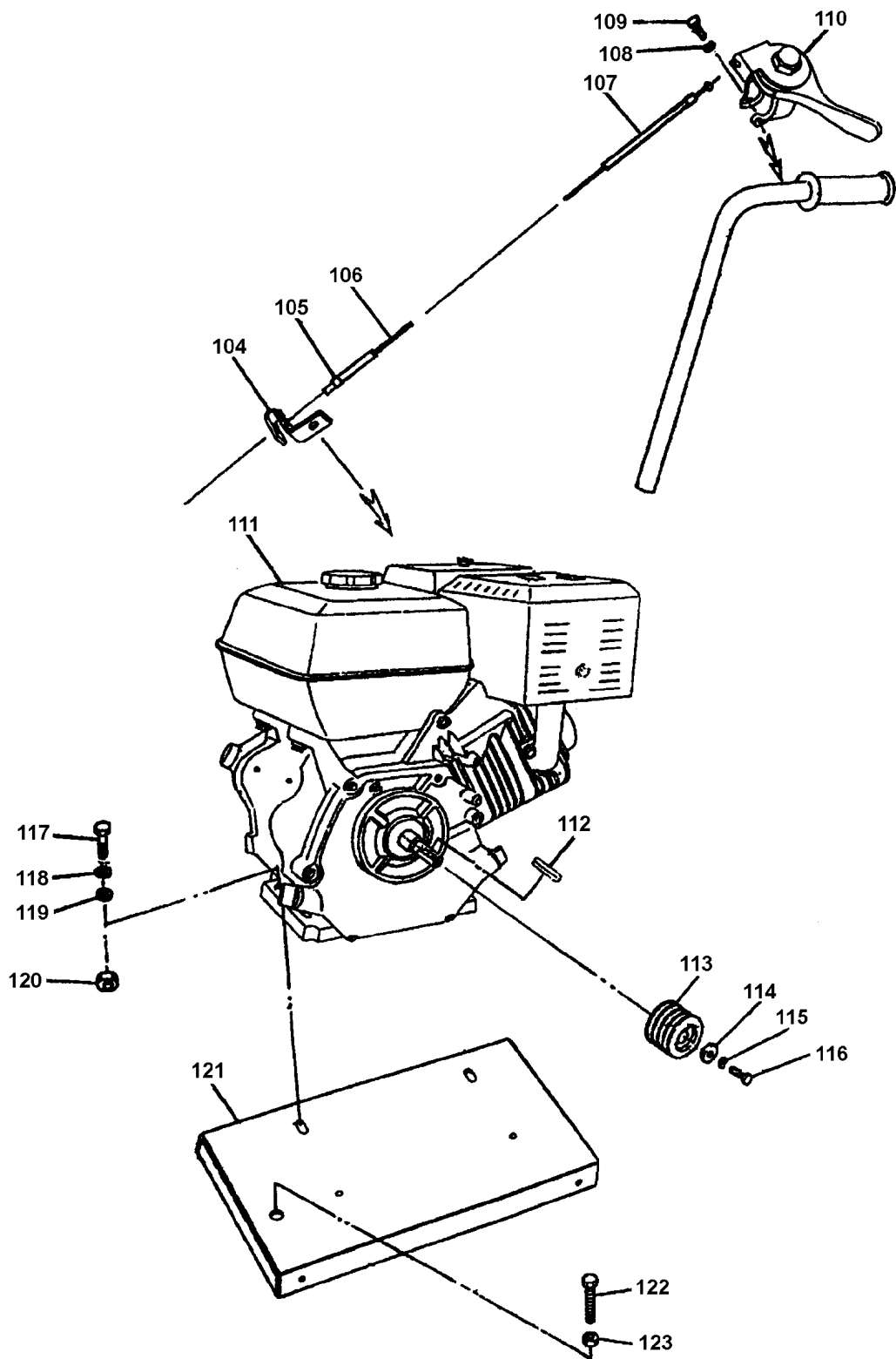
2. Transmission Assy.

2. Transmission Assy.

ITEM NO.	PART NO.	DESCRIPTION	QTY
46	2020101	BOLT M8 X 25	6
47	2020102	WASHER 8	5
48	2020103	WHEEL HANDLE	1
49	2020104	BOLT M10 X 30	6
50	2020105	WASHER 10	5
51	2020106	BEARING ASSY.	2
52	2020107	KEY 6 X 30	2
53	2020108	MAIN SHAFT	1
54	2020109	STEM	1
55	2020110	SPRING WASHER M10	1
56	2020111	NUT M10	1
57	2020201	PEDAL	1
58	2020202	LEVER	1
59	2020301	PROTECTIVE PLATE	1
60	2020401	WASHER M10	2
61	2020402	KEY 10 X 40	1
62	2020403	WASHER 35	1
63	2020404	KEY 8 X 40	1
64	2020405	SLEEVE FOR CLUTCH	1
65	2020406	BEARING ASSY.	2
66	2020407	LEFT WHEEL	1
67	2020408	WASHER 12	4
68	2020409	SPRING WASHER 12	4
69	2020410	BOLT M12 X 40	4
70	2020411	REAR AXIS	1
71	2020412	WORM	1
72	2020413	SLEEVE, WORM	1
73	2020414	RIGHT WHEEL	1

3. Depth Adjusting Assy.

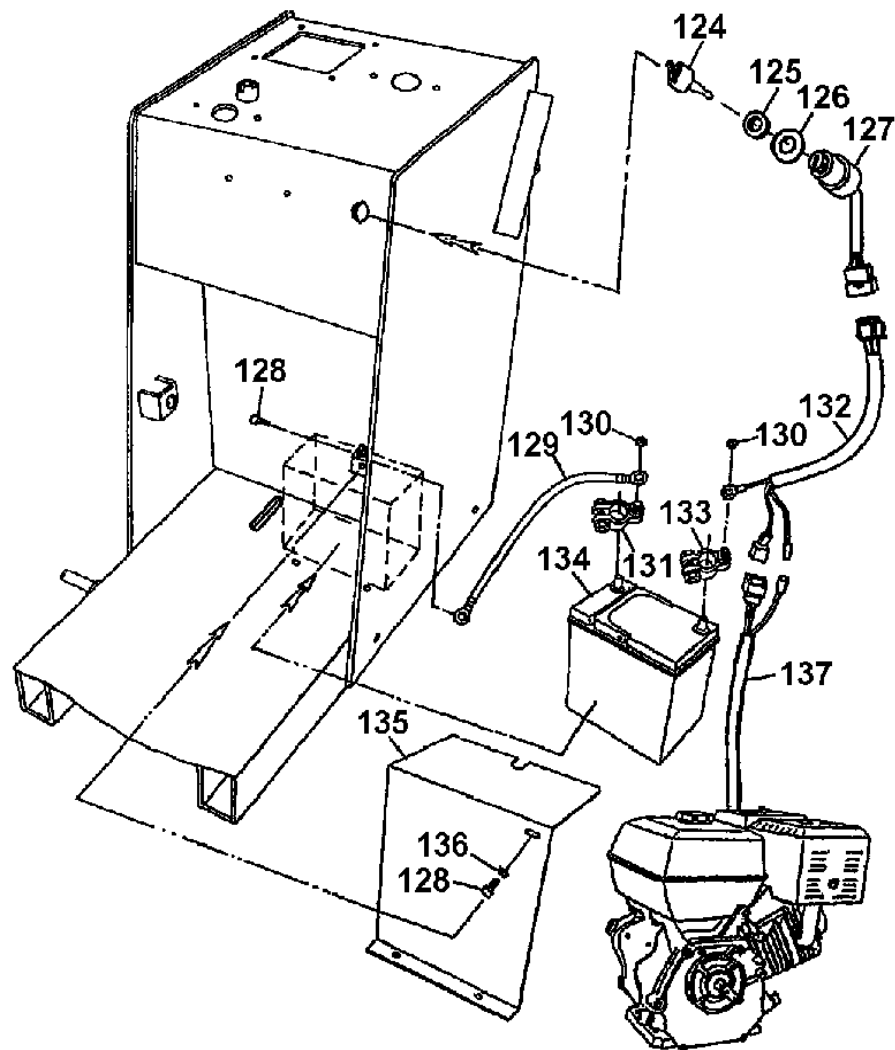
ITEM NO.	PART NO.	DESCRIPTION	QTY
74	2030101	PULLING NUT	3
75	2030102	SPRING PIN 4 X 16	1
76	2030103	SPRING	2
77	2030104	PIN	1
78	2030201	WHEEL HANDLE	1
79	2030202	BOLT M10 X 30	1
80	2030203	WASHER 10	1
81	2030204	BOLT M8 X 25	1
82	2030205	WASHER 8	1
83	2030206	BOLT M8 X 12	1
84	2030207	BEARING ASSY.	2
85	2030208	POSITION PLATE	2
86	2030209	SCREW STEM	1
87	2030210	CONNECTING STEM	1
88	2030211	NUT M10	4
89	2030301	RIVET	4
90	2030302	SCALE	3
91	2030303	POINTER	1
92	2030401	SPRING	1
93	2030402	CONNECTING PIPE	1
94	2030403	WASHER 12	1
95	2030404	BOLT M12 X 70	1
96	2030501	NUT M12	1
97	2030502	BOLT M12 X 10	2
98	2030601	BEARING ASSY.	2
99	2030602	SPRING WASHER 10	2
100	2030603	BOLT	1
101	2030604	WASHER	1
102	2030605	WHEEL	1
103	2030606	WHEEL RACK MODULE	1



4. Engine Assy.

4. Engine Assy.

ITEM NO.	PART NO.	DESCRIPTION	QTY
104	2040101	FIXING PLATE	1
105	2040102	CONNECTOR	1
106	2040103	CABLE	1
107	2040104	CABLE PIPE	1
108	2040105	SCREW M6 X 25	1
109	2040106	WASHER M6	1
110	2040107	THROTTLE CONTROL	1
111	2040201-1	DIESEL, KAMA 186	1
	2040201-2	PETROL, 188F	1
	2040201-3	PETROL, EH36D	1
	2040201-4	PETROL, HONDA GX390K1	1
112	2040202-1	KEY FOR DIESEL ENGINE	1
	2040202-2	KEY FOR PETROL ENGINE	1
113	2040203-1	PULLEY FOR DIESEL ENGINE	1
	2040203-2	PULLEY FOR CHINESE PETROL ENGINE	1
	2040203-3	PULLEY FOR ROBIN ENGINE	1
	2040203-2	PULLEY FOR HONDA ENGINE	1
114	2040204	WASHER M8	1
115	2040205	SPRING WASHER M8	1
116	2040206	BOLT M8 X 25	1
117	2040301	BOLT M10 X 40	4
118	2040302	SPRING WASHER M10	6
119	2040303	WASHER M10	6
120	2040304	NUT M10	2
121	2040305	BASE PLATE	1
122	2040306	BOLT M16 X 10	1
123	2040307	NUT M16	1

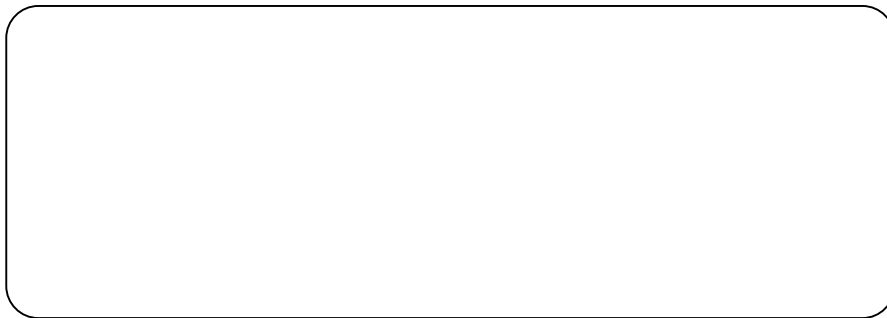


5. Electric Starter Assy. (Optional)

ITEM NO.	PART NO.	DESCRIPTION	QTY
124	2050101	KEY	2
125	2050102	TIGHTENING SPACER	1
126	2050103	WASHER	1
127	2050104	ELECTRIC CONNECTOR	1
128	2050201	BOLT M8 X 20	4
129	2050202	ELECTRIC CABLE	4
130	2050203	NUT M6	2
131	2050204	PLUG NEGATIVE	1
132	2050301	WIRE	1
133	2050302	PLUG POSITIVE	1
134	2050401	BATTERY	1
135	2050402	BATTERY GUARD	1
136	2050403	WASHER M8	4
137	2050501	WIRE	1



Distributed By



MASALTA ENGINEERING CO., LTD

Add:RM 501, Fortune Plaza, No.278 of Suixi Rd., Hefei 230041,China

Tel: 86-551-5609770, 5609780 Fax: 86-551-5609010, 5609444

E-mail: sales@masalta.com.cn, masalta@mail.hf.ah.cn

[Http://www.masalta.com.cn](http://www.masalta.com.cn)