



MASALTA®



OPERATION MANUAL WALK-BEHIND POWER TROWEL MT36 MT42 MT46



WARNING

To reduce the risk of injury, all operators and maintenance personnel must read and understand these instructions before operating, changing accessories, or performing maintenance on Masalta power equipment. All possible situations cannot be covered in these instructions. Care must be exercised by everyone using, Maintaining or working near this equipment.

Table of Contents

HEALTH & SAFETY	1
Safety Precautions	1
INTRODUCTION	2-3
Operating Principle	2
Delivery Checks	2
Standard Features	2
Preparation for Service	2-3
OPERATIONS	3-4
To Start	3
To Shut Off	3
Initial Operation	4
Floating Operation	4
Maneuver Operation	4
Lifting Trowel	4
MAINTENANCE	5
Maintenance, Lubrication and Adjustment	5
Lubrication	5
SPECIFICATION	5
Motor	5
Operation Mass	5
Rotor Diameter	6
Number of Blades	6
Finish Blades	6
Combination Blades	6
Pans	6
Nameplate	6
Working Size	6
TRANSPORTATION	6
TROWEL TROUBLE SHOOTING	7
REPLACEMENT PARTS LIST	8-14
WARRANTY	15
MAINTENANCE RECORD	15
EC DECLARATION	16

HEALTH & SAFETY --- SAFETY PRECAUTIONS



WARNING

- Before using this equipment, study the entire owner's manual to become familiar with its operation. Do not allow untrained or unauthorized personnel, especially children, to operate this equipment. Use only factory authorized parts for service.

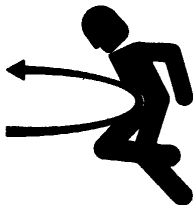


USE COMMON SENSE WHEN HANDLING FUELS

- Transport and handle fuel only when contained in approved safety containers.
- Do not smoke when refueling the engine or during any other fuel handling operation.
- If fuel is spilled during refueling, wipe it off from the engine immediately and discard the rag in a safe place. Do not operate the unit if fuel or oil leaks exist-repair immediately.
- Never operate this equipment in an explosive atmosphere.



- Never perform any work on the unit while it is running. Before working on it, stop the engine and disconnect the spark plug wire to prevent accidental starting.
- Do not operate this unit without all guards in place. Keep hands, feet, clothing and jewelry away from the unit blades and all moving parts. Rotating and moving parts will cause serious injury if contacted during operation.
- Do not allow anyone to stank or lean on the unit during operation.



- Keep the safety stop switch system in adjustment and good operating condition at all times. Do not operate the trowel if it does not work properly. Out of control Trowels can cause serious personal injury and damage to fresh concrete surfaces. This system will automatically stop the unit if the operator loses control of it during operation.
- Make sure the safety stop switch is disengaged (lever in the down position) before starting the unit. Keep one hand firmly on the handle while starting and do not let go of the handle during operation.



- Avoid contact with hot exhaust systems and engine parts.
- Allow engine to cool before performing any repairs or service.



- Ear protection required when operating this equipment.



- Never operate any gas powered equipment in a poorly ventilated or enclosed area.
- Avoid prolonged breathing of exhaust gases.

INTRODUCTION

Operating Principle/Delivery Checks

OPERATING PRINCIPLE

The following instructions were compiled to provide you information on how to obtain long and trouble free use of the unit. Periodic maintenance of this unit is essential. Read the manual in its entirety and follow the instructions carefully. Failure to do so may injure yourself or a bystander.

DELIVERY CHECKS—Immediately on taking delivery of your new equipment and before putting it into service.

- Read the handbook completely—it could save a great deal of unnecessary expense.
- Read the engine manual supplied.
- Check the general condition of the equipment –has it been damaged during delivery?
- Check engine oil level.
- Check fuel levels.

Recommended lubricants are detailed in the Care and Maintenance section.

Standard Features/Preparation for Service

STANDARD FEATURES

Your new Power Trowel comes standard with many features to enhance productivity, performance and safety. Listed below are just a few of these features.

SAFETY STOP SWITCH—The switching mechanism of this switch should operate freely and should always be

kept in this condition. With the switch in the OFF position, the engine should not start or run. The purpose of this switch is to stop the engine in a runaway situation, (i.e. the operator releasing the handle during operation).

ADJUSTABLE THROTTLE—Located in a convenient location, this push-pull throttle control can be set to provide any blade speed from 50 to 130 RPM, and located in place at the desired operating speed.

BENT ARM ADJUSTMENT—Allows blades to be adjusted to compensate for bent arms caused by dropping or mishandling the trowel. Can be easily adjusted on-site for consistent finishing.

HEAVY DUTY RING GUARD—Protects operator and unit while providing lower center of gravity which contributes to unit stability and performance.

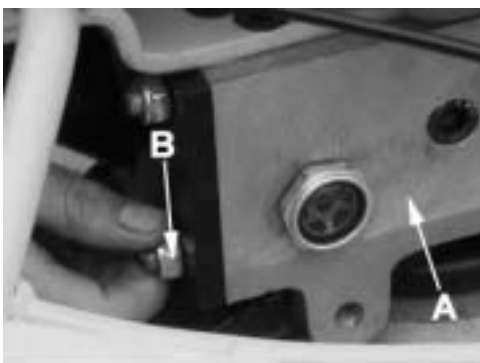
CAST IRON SPIDER—Extra strong for insure alignment. Also contributes to lower center or gravity for increased trowel performance.

ADJUSTABLE HANDLE—Can be positioned to provide comfort and control for any operator’s height.

TILT ADJUSTMENT KNOB – adjusts the angle of the blades for different curing stages and conditions of the concrete. Turning the knob clockwise increases the angle of the blades to the concrete. Turning the knob counter-clockwise flattens or decreases the angle of the blades.

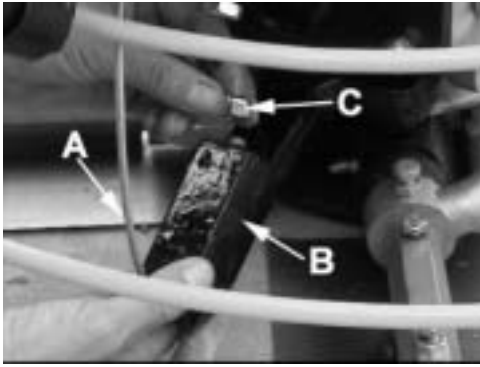
PREPARATION FOR SERVICE

BEFORE STARTING—Your new Power Trowel has been assembled and tested at the factory. However, before placing the unit into service the following items should be checked:



ASSEMBLY AND INSTALLATION

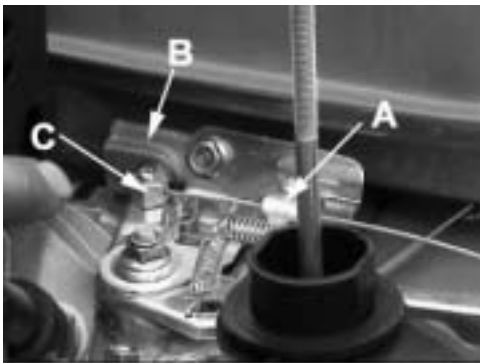
STEP 1: Un-pack the handle assembly and the lower unit from the boxes. Check to make sure no damage was done during shipment. Mount the handle assembly to the gearbox (A) on the lower unit using 10mm nuts (B) that are supplied in a package on the lower unit.



STEP 2: With the handle mounted to the lower unit, attach the pitch control cable (A) through the yoke arm (B) using the remaining 10mm nut (C). Tighten the nut.



STEP 3: Attach the kill wire that is coming from the handle assembly to the engine using the wire splicer that is supplied on the lower unit.



STEP 4: Make sure that the throttle lever on the handle assembly is pushed all the way forward. Remove the breather cap and the breather from the engine. Unscrew the cable adjustment clasp (A). Next, make sure that the throttle lever (B) on the engine is pushed all the way forward. Insert the wire coming out of the cable into the hole (C) shown on the diagram. With everything in place, put the cable adjustment clasp (A) back on and tighten down snug.

OIL LEVEL AND LUBRICATION—Check the oil level in the engine and gearbox. Engine and trowel warranties are VOID if this unit is run without oil. The blade have been greased.

FUEL—Fill the fuel tank on gasoline engines with clean gasoline from a safety can. DO NOT mix oil with the gasoline.

OPERATIONS ---To Start/To Shut Off/Initial Operation/Floating Operation/Finishing Operation/

Maneuver Operation/Lifting Trowel

TO START

Make sure the safety stop switch is in the **STOP** position. If it is not, push the lever down to the **STOP** position before attempting to start the engine. Open fuel valve under fuel tank (if so equipped), open throttle approximately half way down and apply choke. Holding unit handle firmly with one hand, pull the starter rope sharply with the other about (3) times. When engine starts, open choke and adjust throttle as necessary to keep it running. If engine doesn't start after (3) pulls, open choke slightly.

NOTE: These starting instructions are general guidelines only. Since many engine options are available on our power trowels, consult the ENGINE MANUAL included with the unit for specific instructions.

TO SHUT OFF

HONDA ENGINES - close throttle all the way and flip oil minder kill switch to the **OFF** position.

ROBIN ENGINES – close throttle all the way, depress kill switch button and hold down until engine stops completely.

INITIAL OPERATION

With engine started as instructed previously and at operating temperature, adjust speed to about half throttle. Hold the handle firmly with one hand and move the safety stop switch to RUN position to engage the trowel blades.

FLOATING OPERATION

Attach float blades to the trowel arms, and when the concrete has set sufficiently to support the weight of the trowel, place the unit on the concrete. Start the unit and engage the blades as previously instructed. Using the tilt adjustment knob to adjust the blades to the float position-blades should be as flat to the concrete as possible with enough tension kept on the tilt adjustment cable to prevent the unit from dancing or chattering.

Guide the trowel over the concrete in a circular back and forth motion. Under normal conditions, you should be able to float a 30 x 30 foot area in approximately 15 minutes.

This operation will bring the water and fines to the surface,

allowing for a smoother finish when finishing the concrete

FINISHING OPERATION

After floating, allow the concrete to set until it will support the weight of the trowel. Set the pitch to approximately 1/4" to 3/8" on the blades. If the blades start to dig into the concrete, decrease the amount of pitch.

LIFTING THE TROWEL

Remove the auxiliary lifting tube located on top of the main handle. Insert the tube into the socket located on the opposite side of the gearbox from the handle.

Make sure that the hole in the tube engages with the pin in the socket. With one person lifting from the main handle, and another lifting from the auxiliary lifting tube pick up the machine to move onto a slab.

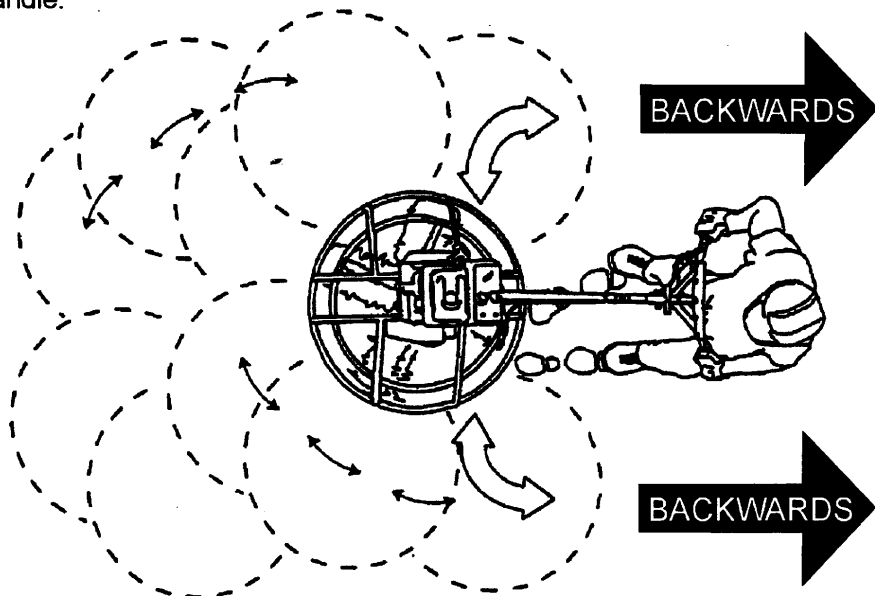
MANEUVER OPERATION

Below illustrates a typical walk-behind trowel application. Practice maneuvering the trowel. The trick is to let the trowel do the work.

Continue to practice maneuvering the trowel. Try to practice as if you were finishing a slab of concrete. Practice edging and covering a large area. Remember a good finishing technique is to work backwards. Be careful when moving backwards so that hazards can be avoided. The best way to get accustomed to the trowel is repeated use.

To move the trowel to the operator's left, **lift up** on the handle, to move the trowel to the right **push down** on the handle.

Remember! that if you let go of the trowel, just **step away** and let the trowel come to a complete **STOP** before trying to recover the trowel.



The best method for finishing concrete is to slowly walk **backwards** with the trowel, guiding the trowel from side to side. This will cover all footprints on wet concrete.

MAINTENANCE

Maintenance, Lubrication, adjustment/Lubrication

MAINTENANCE, LUBRICATION AND ADJUSTMENT

To get long and trouble free service from your new Power Trowel, it is essential to perform periodic maintenance on engine and machine mechanisms. Follow the guidelines listed below;

LUBRICATION

A. ENGINE CRANKCASE

Daily—check oil level in engine. Engine warranty is VOID if it is run without oil. Add oil as required to keep crankcase full. Engine oil should be changed every 250 hours of operation, or once a year, whichever comes first.

Oil requirements are as follows:

Temperatures above 40 (4) – SAE 30
Temperatures below 40 (4) – SAE 5W20

These oil requirements are general guidelines only, for specific requirements consult the ENGINE MANUAL included with the unit.

See the engine manual supplied with your machine for appropriate engine maintenance schedule and troubleshooting guide for problems.

B. TROWEL

Daily (8-10 Hours)

1. Check the oil level in the engine crankcase and gear box, fill as necessary.
2. Check V-belt.

Weekly (50-60 Hours)

1. Relube arms, thrust collar and clutch.
2. Replace blades if necessary.
3. Check and clean or replace the engine air filter as necessary.
4. Replace engine oil and filter as necessary, see engine manual.

Monthly (200-300 Hours)

1. Remove, clean reinstall and relube the arms and thrust collar. Adjust the blade arms.
2. Grease arm bearing through the grease fittings in the spider. Pump grease into each fitting until clean grease comes out of spider at either end, thoroughly clean excess grease off from spider when all arms has been greased.
3. Remove, clean, reinstall clutch.

Yearly (2000-2500 Hours)

1. Check and replace if necessary the arm bushings, thrust collar bushings and shaft seals.
2. Check pitch control cables for wear.
3. Adjust blade speed.

SPECIFICATION

MOTOR

MT36-1	Diesel	3.2 kw output
MT36-2	Chinese Petrol Engine	4.0 kw output
MT36-3	Petrol, Robin EX17	3.2 kw output
MT36-4	Petrol, Honda GX160	4.0 kw output
MT42-2	Chinese Petrol Engine	6.0kw output
MT42-3	Petrol, Robin EX27	6.8kw output
MT42-4	Petrol, Honda GX240	6.0kw output
MT46-2	Chinese Petrol Engine	6.8kw output
MT46-3	Petrol, Robin EX27	6.8kw output
MT46-4	Petrol, Honda GX270	6.8kw output

OPERATION MASS

MT36-1	95kgs
MT36-2	77kgs
MT36-3	75kgs
MT36-4	75kgs
MT42-2	115kgs
MT42-3	111kgs
MT42-4	115kgs
MT46-2	125kgs
MT46-3	121kgs
MT46-4	125kgs

	MT36	MT42	MT46
Rotor Diameter	90 cm (36")	106 cm (42")	117cm (46")
Number of Blades	4	4	4
Finishing Blades	MTBF06140 6X14"	MTBF06160 6X16"	MTBF06180 6X18"
Combination Blades	MTBC08140 8X14"	MTBC08160 8X16"	MTBC08180 8X18"
Pans	MTBP370 37"	Not recommended	Not recommended



Nameplate

Walk-Behind Power Trowel MT -

Operation Mass (kg): Power (kw):

Rotor Diameter (cm): Manuf. Yr.:

Serial No.:

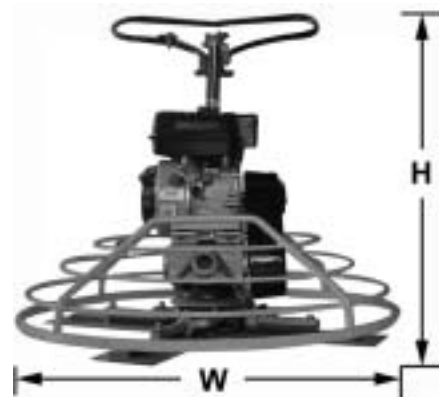
MASALTA® www.masalta.com.cn

Working Size (L x W x H):

MT36: 180 x 97 x 91cm

MT42: 195 x 112 x 99cm

MT46: 200 x 122 x 99cm



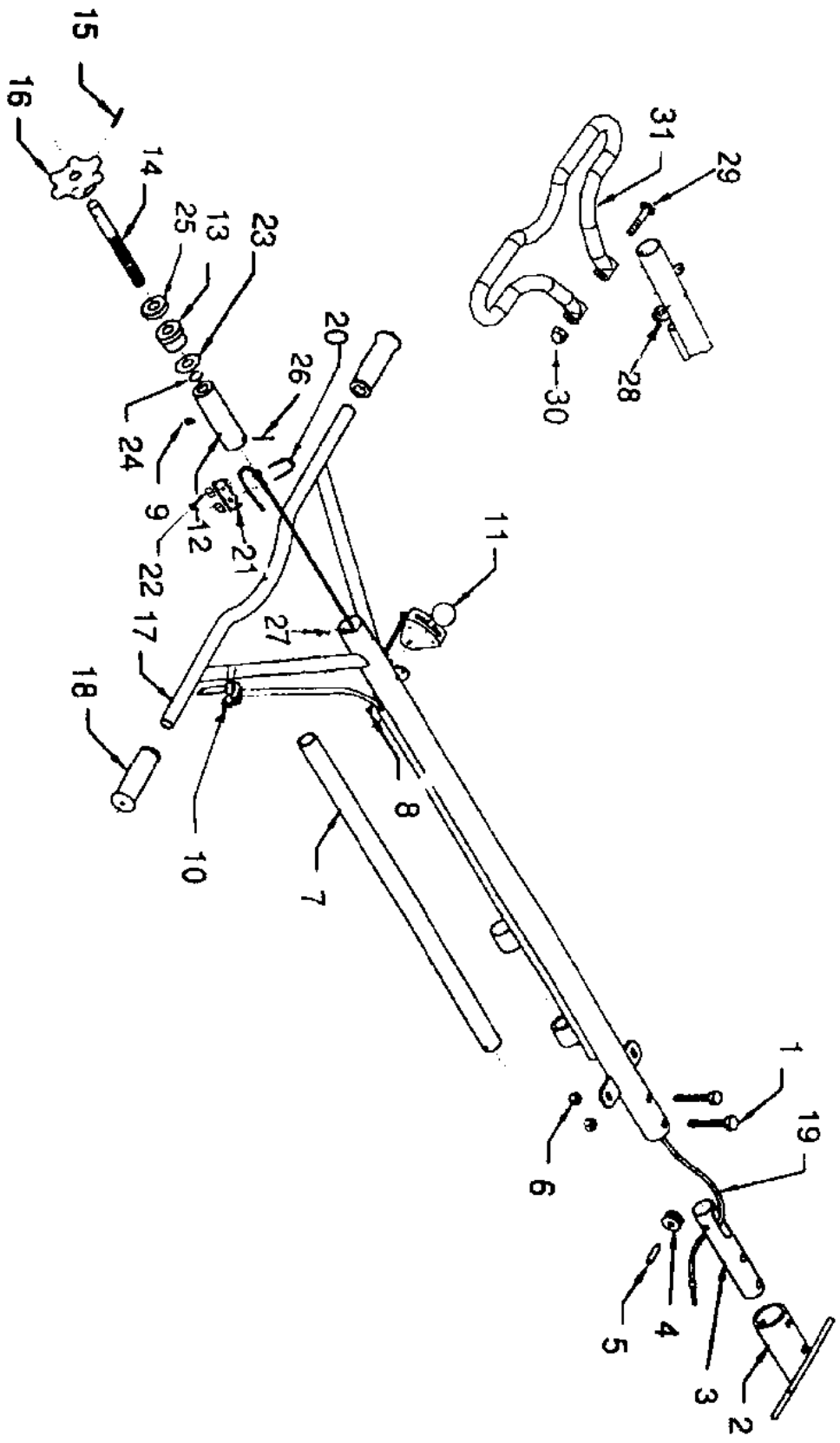
TRANSPORTATION

1. Always shut off engine when transporting machine.
2. Make sure lifting device has enough capacity to hold machine (see identification plate on machine for weight).
3. Use lifting tube and lifting hook (as optional) when lifting machine.



TROUBLE SHOOTING (TROWEL)

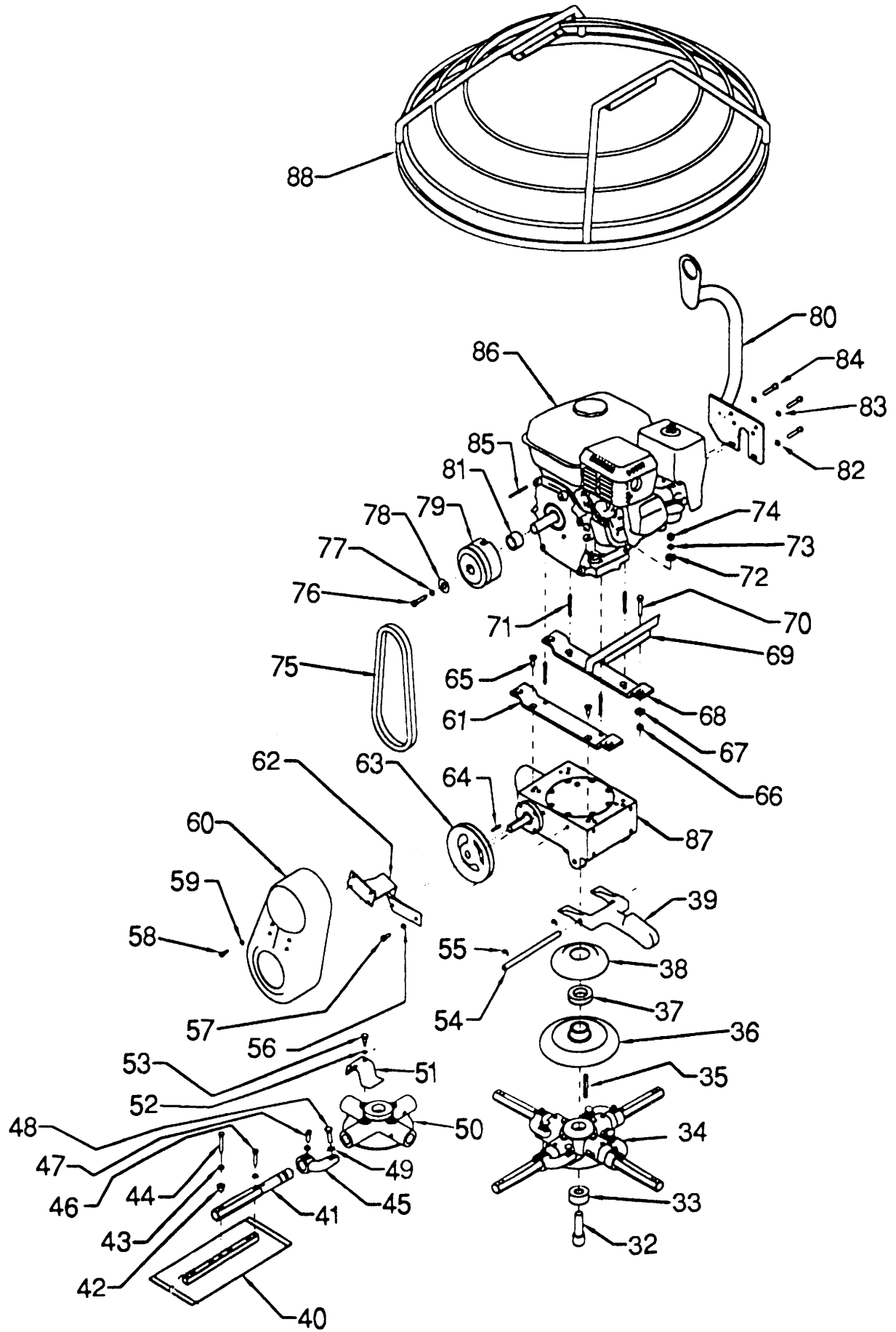
SYMPTOM	POSSIBLE PROBLEM	SOLUTION
Engine running rough or not at all.	Safety switch malfunction?	Make sure that the safety switch is ON or replace switch if necessary.
	Fuel?	Look at the fuel system. Make sure there is fuel being supplied to the engine. Check to ensure that the fuel filter is not clogged.
	Ignition?	Check to ensure that the ignition switch has power and is functioning correctly.
Safety switch not functioning.	Bad contacts?	Replace switch.
	Loose wire connections?	Check wiring. Replace as necessary.
	Other problems?	Consult engine manufacturer's manual.
If trowel "bounces, rolls concrete, or makes uneven swirls in concrete".	Blades?	Make certain blades are in good condition, not excessively worn. Finish blades should measure no less than 2" (500mm) from the blade bar to the trailing edge, combo blades should measure no less than 3.5" (89mm).
	Spider?	Check that all blades are set at the same pitch angle as measured at the spider.
	Bent trowel arms?	Check the spider assembly for bent trowel arms. If one of the arms is even slightly bent, replace it immediately.
	Trowel arm bushings?	Check the trowel arm bushings for tightness. This can be done by moving the trowel arms up and down. If there is more than 1/8" (3.2mm) of travel at the tip of the arm, the bushings should be replaced. All bushings should be replaced at the same time.
	Thrust collar?	Check the flatness of the thrust collar by rotating it on the spider. If it varies by more than 0.02" (0.5mm) replace the thrust collar.
	Thrust collar bushing?	Check the thrust collar by rocking it on the spider. If it can tilt more than 3/32" (2.4mm) [as measured at the thrust collar O.D.], replace the bushing in the thrust collar.
Machine has a perceptible rolling motion while running.	Thrust bearing worn?	Check the thrust bearing to see that it is spinning free. Note: Thrust cap, replace if necessary.
	Main shaft?	The main output shaft of the gearbox assembly should be checked for straightness. The main shaft must run straight and cannot be more than 0.003" (0.08mm) out of round at the spider attachment point.
	Yoke?	Check to make sure that both fingers of the yoke press evenly on the wear cap. Replace yoke as necessary.
Clutch slipping or sluggish response to engine speed change.	Blade Pitch?	Check to ensure that each blade is adjusted to have the same pitch as all other blades. Adjust per maintenance section in manual.
	Worn V-belts?	Replace V-belt.
	Dirty centrifugal clutch?	Disassemble and clean clutch.
	Defective or worn out centrifugal clutch?	Replace entire clutch.
	Worn bearings in gearbox?	Rotate input shaft by hand. If shaft rotates with difficulty, check the input and output shaft bearings. Replace as necessary.
Worn or broken gears in gearbox?	Verify that the gearbox shaft rotates when the input shaft is rotated. Replace both the worm and worm gear as a set.	



PARTS LIST 1

PARTS LIST 1

ITEM NO.	PART NO.	DESCRIPTION	QTY
1	M360100000	SCREW	2
2	M360100001	BRACKET	1
3	M360100002	BLOCK SUPPORT	1
4	M360100003	PULLEY, SUPPORT BLOCK	1
5	M360100004	PIN, SUPPORT BLOCK	1
6	M360100005	NUT	2
7	M360100006-1	LIFTING TUBE, MT36	1
	M360100006-2	LIFTING TUBE, MT42 & MT46	1
8	M360100007	SCREW	2
9	M360100008	SCREW	1
10	M360100009	THROTTLE CONTROL	1
11	M360100010	SAFETY STOP SWITCH ASSY.	1
12	M360100011	SHAFT, TROWEL CONTROL	1
13	M360100012	COLLAR	1
14	M360100013	BOLT	1
15	M360100014	PIN	1
16	M360100015	WHEEL, HAND HANDLE	1
17	M360100016-1	HANDLE, MT36	1
	M360100016-2	HANDLE, MT42 & MT46	1
18	M360100017	GRIP	2
19	M360100018	WIRE	1
20	M360100019	TIE WIRE	1
21	M360100020	CLIP	1
22	M360100021	NUT	2
23	M360100022	SPACER	1
24	M360100023	SPRING WASHER	1
25	M360100024	BERING	1
26	M360100025	PIN	1
27	M360100026	SCREW	1
28	M360100027-1	BRACKET, HANDLE ADJUSTABLE, MT36	1
	M360100027-2	BRACKET, HANDLE ADJUSTABLE, MT42 & MT46	1
29	M360100028	SCREW	1
30	M360100029	NUT	1
31	M360100030	HANDLE ADJUSTABLE	1



PARTS LIST 2

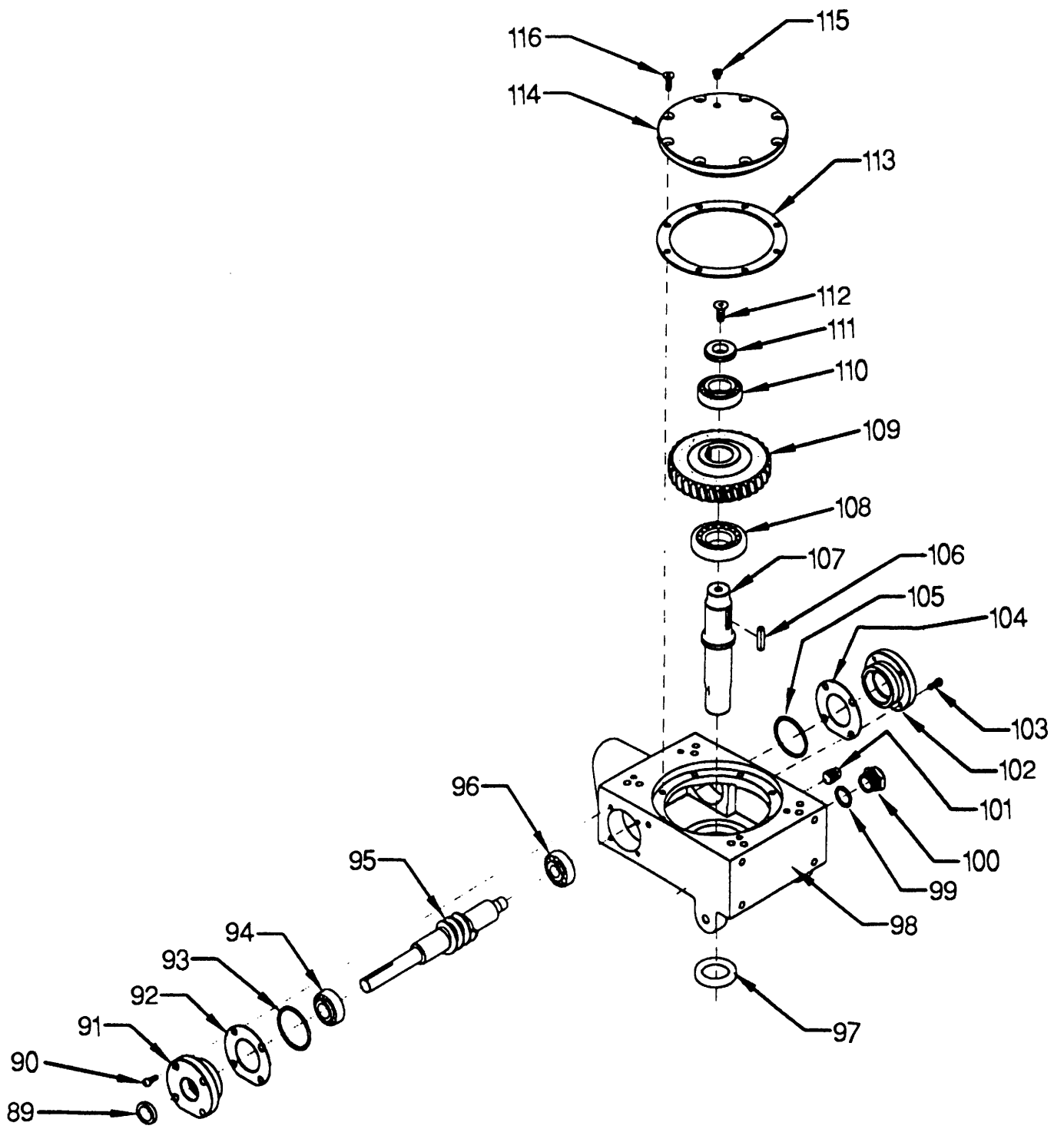
PARTS LIST 2

ITEM NO.	PART NO.	DESCRIPTION	QTY
32	M360200001	SCREW MIZ	1
33	M360200002	SPACER	1
34	M360200003	SPIDER PLATE ASSY.	1
35	M360200004	PIN	1
36	M360200005	WEAR PLATE	1
37	M360200006	BEARING	1
38	M360200007	WEAR RING	1
39	M360200008	ARM, YOKE	1
40	M360200009-1	BLADE, MT36	4
	M360200009-2	BLADE, MT42	4
	M360200009-3	BLADE, MT46	4
41	M360200010-1	TROWEL ARM EXTENDED, MT36	4
	M360200010-2	TROWEL ARM EXTENDED, MT42 & MT46	4
42	M360200011	SPACER	8
43	M360200012	SPRING WASHER	8
44	M360200013	SCREW	8
45	M360200014	TROWEL ARM LEVER	4
46	M360200015	SCREW	4
47	M360200016	ROLL PIN	4
48	M360200017	RADIUS HEAD SCREW	4
49	M360200018	NUT	8
50	M360200019	SPIDER PLATE ONLY	1
51	M360200020	SPRING PLATE	4
52	M360200021	NUT	4
53	M360200022	SCREW	4
54	M360200023	PIN, YOKE	1
55	M360200024	WASHER	2
56	M360200025	SPACER	2
57	M360200026	SCREW M8	2
58	M360200027	SCREW M6	4
59	M360200028	SPACER	4
60	M360200029-1	BELT GUARD, MT36	1
	M360200029-2	BELT GUARD, MT42 & MT46	1
61	M360200030	FRONT ENGINE MOUNTING PLATE	1
62	M360200031	MOUNTING PLATE, BELT GUARD	1
63	M360200032	PULLEY	1
64	M360200033	KEY	1

(TO BE CONTINUED)

PARTS LIST 2

ITEM NO.	PART NO.	DESCRIPTION	QTY
65	M360200034	SCREW, FLAT HEAD	4
66	M360200035	NUT	4
67	M360200036	RUBBER WASHER	4
68	M360200037	REAR ENGINE MOUNTING PLATE	1
69	M360200038-1	BRACKET, GUARD, MT36	1
	M360200038-2	BRACKET, GUARD, MT42	1
	M360200038-3	BRACKET, GUARD, MT46	1
70	M360200039	SCREW	4
71	M360200040	SCREW	4
72	M360200041	SPACER	4
73	M360200042	SPRING WASHER	4
74	M360200043	NUT	4
75	M360200044-1	BELT, MT36	1
	M360200044-2	BELT, MT42 & MT46	
76	M360200045	SCREW	1
77	M360200046	SPRING WASHER	1
78	M360200047	SPACER	1
79	M360200048	CLUTCH ASSY.	1
80	M360200049-1	LIFTING HOOK, MT36 (OPTIONAL)	1
	M360200049-2	LIFTING HOOK, MT42 & MT46 (OPTIONAL)	1
81	M360200050	WASHER	1
82	M360200051	SPACER	4
83	M360200052	SPRING WASHER	4
84	M360200053	SCREW	4
85	M360200054	KEY	1
86	M360200055-1	CHINESE PETROL ENGINE 5.5HP, MT36	1
	M360200055-2	ROBIN PETROL ENGINE 5.5HP, MT36	1
	M360200055-3	HONDA PETROL ENGINE 5.5HP, MT36	1
	M360200056-1	CHINESE PETROL ENGINE 8HP, MT42	1
	M360200056-2	ROBIN PETROL ENGINE 9HP, MT42 & MT46	1
	M360200056-3	HONDA PETROL ENGINE 8HP, MT42	1
	M360200057-1	CHINESE PETROL ENGINE 9HP, MT46	1
	M360200057-2	HONDA PETROL ENGINE 9HP, MT46	1
87	M360200058	GEARBOX ASSY.	1
88	M360200059-1	GUARD RING ASSY., MT36	1
	M360200059-2	GUARD RING ASSY., MT42	1
	M360200059-3	GUARD RING ASSY., MT46	1



PARTS LIST 3

PARTS LIST 3

ITEM NO.	PART NO.	DESCRIPTION	QTY
89	M360300001	SEAL	1
90	M360300002	SCREW	4
91	M360300003	FLANGE, INPUT SHAFT	1
92	M360300004	PLATE, SEAL	1
93	M360300005	O-RING	1
94	M360300006	BEARING	1
95	M360300007	GEAR, WORM & SHAFT ASSY.	1
96	M360300008	BEARING	1
97	M360300009	SEAL, OIL	1
98	M360300010	CASE, GEAR	1
99	M360300011	SEAL	1
100	M360300012	SIGHT GLASS	1
101	M360300013	FITTING, PLUG	1
102	M360300014	FLANGE	1
103	M360300015	SCREW M6	4
104	M360300016	SEAL	1
105	M360300017	O-RING	1
106	M360300018	KEY	1
107	M360300019	SHAFT	1
108	M360300020	BEARING	1
109	M360300021	GEAR, WORM	1
110	M360300022	BEARING	1
111	M360300023	SPACER	1
112	M360300024	SCREW M10	1
113	M360300025	SEAL	1
114	M360300026	COVER, GEAR BOX	1
115	M360300027	SCREW	1
116	M360300028	SCREW M8	8

**EC DECLARATION OF CONFORMITY/DECLARATION CE DE CONFORMITE/DECLARACOIN DE CONFORMIDAD CE/
DECLARO CE DE CONFORMIDADE/EG-VERKLARING VAN OVEREENSTEMMING**

GB

We, Masalta Engineering Co., Limited, RM 501, Fortune Plaza, No.278 of Suixi Rd., Hefei 230041, China, hereby certify that if the product described within this certificate is bought from an authorised Masalta dealer within the EEC, it conforms to the following EEC directives: 98/37/EC (This directive is a consolidation of the original machinery directive 89/392/EEC), Electromagnetic Compatibility Directive 89/336/EEC (as amended by 92/31/EEC & 93/68/EEC).

F

Nous soussignons, Masalta Engineering Co., Limited, RM 501, Fortune Plaza, No.278 of Suixi Rd., Hefei 230041, China, certifions que si le produit dcrit dans ce certificat est achet chez un distributeur autoris Masalta au sein de la CEE, il est conforme aux normes CEE ci-aprs: 98/37/CE (cette norme est une codification des normes de la machine d'origine 89/392/CEE), Norme compatible pour l'lectromagntisme 89/336/CEE (modifi par 92/31/CEE et 93/68/CEE).

E

La Sociedad, Masalta Engineering Co., Limited, RM 501, Fortune Plaza, No.278 of Suixi Rd., Hefei 230041, China, por el presente documento certifica que si el producto descrito en este certificado es comprado a un distribuidor autorizado de Masalta en la CEE, este es conforme a las siguientes directivas: 98/37/CE de la CEE (Esta directiva consolida la directiva inicial sobre maquinaria 89/392/CEE), Directiva 89/336 CEE sobre Compatibilidad Electromagntica (segn enmiendas 92/31.CEE y 93/68/CEE).

P

O signatrio, Masalta Engineering Co., Limited, RM 501, Fortune Plaza, No.278 of Suixi Rd., Hefei 230041, China, pelo presente, declara que se o produto descrito neste certificado foi adquirido a um distribuidor autorizado do Masalta em qualquer pais da UE, est em conformidade com o estabelecido nas seguintes directivas comunitrias: 98/37/EC (esta directive  uma consolidao da directive de maquinaria original 89/392/EEC), Directiva de Compatibilidade Electromagntica 89/336/EEC (conforme corrigido pelas 92/31/EEC & 93/68 EEC).

NL

Ondergetekende, Masalta Engineering Co., Limited, RM 501, Fortune Plaza, No.278 of Suixi Rd., Hefei 230041, China, verklaren hierbij dat als het product zoals beschreven in dit certificaat is gekocht van een erkende Masalta dealer binnen de EEG, het voldoet aan de volgnede EEG richtlijnen: 98/37/EC (Deze richtlijn is een opvolger van de originele Machinerichtlijn 89/392/EEG), Electromagnetische Compatibility Richtlijn 89/336/EEG (geamendeerd door 92/31/EEG & 93/68 EEG).

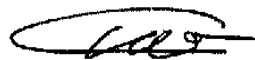
Signed by:

Signature:

Medido por:

Assinado por:

Getekend door:



Tony Hoo

Managing Director

Le Directeur Gnral

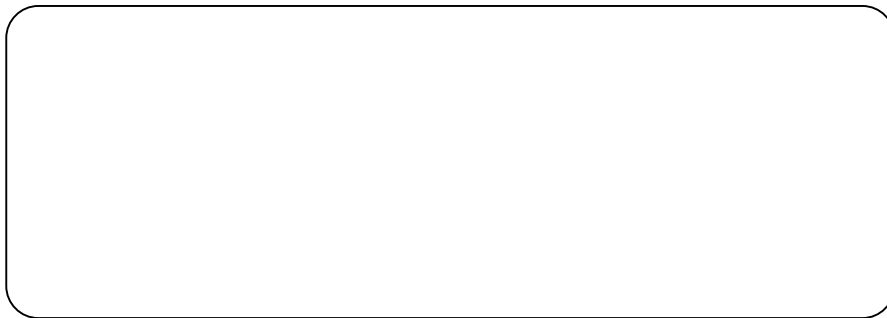
Director Gerente

Director-Geral

Algemeen Directeur



Distributed By



MASALTA ENGINEERING CO., LTD

Add:RM 501, Fortune Plaza, No.278 of Suixi Rd., Hefei 230041,China

Tel: 86-551-5609770, 5609780 Fax: 86-551-5609010, 5609444

E-mail: sales@masalta.com.cn, masalta@mail.hf.ah.cn

[Http://www.masalta.com.cn](http://www.masalta.com.cn)